



Ravalli County 4-H News

April 2011



Dear 4-H Families –

4-H focuses on positive youth development through guidance and leadership of caring adults. Creating this program is intentional and has four key concepts that are a part of youth development programs. Belonging, Independence, Generosity and Mastery are a part of how the program is successful.

Belonging: Kids like to feel like they are a part of something and 4-H is something big! They need to feel like they make a difference and have a connection to others. There are many ways in a group setting that youth can feel like an individual rather than just a part of the group. There are three important factors that make Belonging a part of the youth program:

A positive relationship with a caring adult: Adult/youth friendships are keys to a successful club! It is important for youth to have a positive relationship with adults outside of their family and 4-H club are perfect for kids! These friendships develop by asking the youth about their life, going to important activities, like a soccer game or a school play, or asking them to help with something that uses their strengths.

An inclusive environment: When kids feel like they are accepted in a club, they are more likely to engage in the activities, discussions and develop friendships. At the beginning of the year and when you have new people, have everyone wear name tags and do name games. Give an agenda (print a copy for each member or use butcher paper and write it out for the whole group) so youth can follow along with the meeting. Encourage discussion by asking open ended questions and breaking discussion into small groups of 3-4 people.

A safe emotional and physical environment: Leaders can create an environment that is safe emotionally by creating ground rules for meeting and activities that do not allow put downs (on self or others), not tolerating bullying behavior or cliques and bad behavior is dealt with consistently. Youth are brought into the equation by asking them how to improve the environment. Create a physical environment by thinking about the potential hazards and mapping out how to mitigate those concerns. It can be also achieved by empowering all leaders and parents present to set in and make a potentially unsafe situation into a safe situation.

All of these suggestions are just some of the ways that Belonging can be a part of your club or project meeting. Next month we will explore one of the other concepts.

Have an awesome April!

Katelyn Andersen

MSU Extension Agent



What's Inside	
4-H Calendar & News	2
4-H News, Events & Opportunities	3
4-H Events ~ Members	4
4-H Events ~ Members	5
4-H Events ~ Members	6
4-H Events ~ Members Shooting Sports Results	7
4-H Events ~ Member	8
4-H Project Meetings	9



 Find us on
Facebook

**Montana 4-H
MSU Extension
Ravalli County 4-H**

Contact Us

**Katelyn Andersen
Bobbie Roos**

Extension Agents
MSU Ravalli County Extension
215 South 4th Street Suite G
Hamilton, MT 59840
(406) 375-6611
Fax: (406) 375-6606
katelyna@montana.edu
broos@montana.edu
ravalli@montana.edu

www.msuextension.org/ravalli
www.montana4h.org

The programs of the MSU Extension Service are available to all people regardless of race, color, national origin, gender, religion, age, disability, political beliefs, sexual orientation, and marital or family status. Issued in furtherance of cooperative extension work in agriculture and home economics, acts of May 8 and June 30, 1914, in cooperation with the U.S. Department of Agriculture, Dr. Douglas Steele, Vice Provost and Director, Extension Service, Montana State University, Bozeman, MT 59717.



**MONTANA
STATE UNIVERSITY**

EXTENSION



April 2011

Apr. 1-3	Montana 4-H Rec Lab
Apr. 1	MT Foundation Scholarship Deadline
Apr. 1	4-H Ambassador App. Deadline
Apr. 1	Toastmasters Reg. Deadline, p. 5
Apr. 2	Quilt-in-a-Day Camp, p. 4
Apr. 5-May 24	Toastmasters Youth Leadership, p. 4
Apr. 7-May 19	County Wide Robotics, p. 5
Apr. 8	County Wide Rabbit Meeting, p. 9
Apr. 8	Fashion Revue Reg. Deadline, p. 4
Apr. 9	4-H All Level Horse Clinic, p. 4
Apr. 9	County Wide Photography Meeting, p. 5
Apr. 13	Small Animal Committee Meeting, p. 9
Apr. 13	Dillion Livestock Judging Reg. Deadline
Apr. 14	Horse Committee Meeting, p. 9
Apr. 14	County Wide Beading Meeting, p. 9
Apr. 16	Carnival 2011, p. 4
Apr. 16	Dillion Livestock Judging , p. 6
Apr. 18-24	National Volunteer Week, p. 6
Apr. 19	North & South Valley Poultry Meeting, p. 9
Apr. 20	Missoula Livestock Judging Reg. Deadline
Apr. 23	Missoula Co. Livestock Judging, p. 6
Apr. 28	Fashion Revue 2011, p 4
Apr. 30	Sheep Seminar, p. 3

May 2011& Beyond

May 1	Silver Spurs Hog Raffle, p. 5
May 4	Hooligan's DJ Meeting, p. 9
May 6	Fourth Grade Farm Fair, p.5
May 10	Livestock Committee Meeting, p. 9
May 13	State Horse Show Book Cover deadline, p. 7
May 14	Western MT Qtr Horse Clinic, p. 8
May 16	4-H Council Meeting, p. 9
May 19	Teen Council Meeting, p. 9
May 21	Backcountry Youth Day, p. 8
May 31	Speech & Demo Day, p. 4
Jun. 1	Market Swine Ear Tagging Deadline, p. 3
Jun. 1	Market Sheep Weigh In, p. 3
Jun. 1	Market Goat Weigh In, p. 3
Jun. 12-18	Citizenship Washington Focus
Jun. 25	Walk-a-thon for St. Jude's, p. 5
Jul. 1	MT Fair Jr Livestock Show Reg. Deadline, p. 6
Jul. 2	Livestock Jackpot, p. 8
Jul. 12-15	Montana 4-H Congress, p.5
Jul.19-22	Loon Lake 4-H Camp, p. 5
Aug. 12-20	MT Fair Jr. Livestock Show, p. 6
Aug31-Sept.3	Ravalli County Fair

Scheduled activities are subject to change. For updated information contact the Extension Office at 375-6611. All items for the next month's newsletters must be submitted by the 20th of each month and be limited to one-half page. Newsletter items can be emailed to ravalli@montana.edu or delivered to the Extension Office. Check out the Ravalli County 4-H website: <http://www.msuxextension.org/ravalli>

4-H News:



Order your Greytak Calendar

The 2011 Don Greytak calendars have just arrived! Quantities are limited and all proceeds benefit your Ravalli County 4-H! Contact the Extension Office to get yours today. (Only a few left!!)

Fundraising Equipment Available:

There is a banner for clubs to use for fundraisers or community service projects that reads: Ravalli County 4-H Supporting your local youth. Clubs can also rent a sno-cone machine, cotton candy machine, popcorn machine or large coffee pots from the Ravalli County 4-H Council for \$10! Non 4-H entities can rent the same equipment for a higher price: \$25! There is a required deposit and form to fill out. Call the Extension Office or via email at: ravalli@montana.edu

Celebrate Montana 4-H

"100th Year of 4-H" Photos Needed!

As we are planning for the 100th year of 4-H and the Leadership Forum in 2012 (which is the 100th) the planning committee would like to request from leaders and past leaders submissions of any old photos to be put in a slide show video. If they can, scan them and email them to jep@midrivers.com. Any information about the photo would be great but not necessary.

Invest in Youth and Double Your Money

Looking for a way to invest in youth and double your Money? There are not many opportunities like this these days, but thanks to a generous opportunity presented by the Ruth and Vernon Taylor Foundation and the Montana 4-H Foundation, you can double your money by investing in Montana 4-H Youth.

A great opportunity has been presented to the Montana 4-H Foundation, Inc. to help secure statewide support of Montana 4-H programs for the future! The Ruth & Vernon Taylor Foundation - MT will match, dollar-for-dollar that which Montana 4-H raises up to **\$100,000**; this is a **\$200,000** potential! All dollars (and cents!) raised will go into the Foundation's unrestricted endowment account. The Foundation Board of Directors are working on securing major gifts and grants for this match, but we also would like to challenge counties and clubs to participate in the "Change for the Challenge" campaign.

The Foundation looks forward to hearing of creative ways (some will be published in Clover Connections!) that counties or clubs can become involved in helping meet this challenge to support current and future generations of Montana 4-Hers. **Thank you for your valuable contribution to Montana 4-H!**

Did you know:

You can earn pennies for 4-H each time you use Goodsearch as your search engine? Just put MT 4-H Foundation in as your preferred charity and watch the support grow!



4-H License Plates

Remember when renewing or purchasing a license plate to consider the 4-H license plate. It is available at the Motor Vehicle Department.



4-H Advisory Council Bylaws Revision

The Ravalli County 4-H Advisory Council has proposed revisions for the bylaws. To save on resources, the proposed bylaws are available online and by request through the Extension Office. Please review and comment or come to the May 4-H Advisory Council meeting. The proposed bylaws will be on the agenda for discussion and the Council will vote to accept, amendment or non accept the proposed revisions. Every club gets a vote, please send your representatives and have a voice!

Mini-Horse Class??

The county horse committee is trying to put together plans for a mini-horse class. As we are still debating exactly how to go about it, we are wanting to know how many members would be interested in a mini-horse class. Please email jonell@cybernet1.com if you would want to show a mini-horse at the fair horse show this year. At this point we have discussed a mini-horse showmanship class, trail in hand, and driving class. We are still in the process of discussing workbook issues, mini-horse leader, paperwork red tape, etc. If those who are interested would email us we can make sure the information gets to you when it is all figured out. Jonell Erhart, County Horse Committee

4-H Events: In the county

Market Swine Ear Tagging Deadline

Date: June 1

All market hogs must be tagged with official Ravalli County 4-H ear tag by the June 1 deadline and turned in paperwork to the Extension Office postmarked by June 1. Tagging information is available through the Extension Office starting April 15th.

Market Sheep Weigh In

Date: June 1

Time: 5:00pm—8:00 PM

Location: North Gate of Fairgrounds

Make sure you have your appropriate paperwork filled out. Look for your weigh in information letter in May 2011.

Market Goat Weigh In

Date: June 1

Time: 5:00pm—8:00 PM

Location: North Gate of Fairgrounds

Make sure you have your appropriate paperwork filled out. Look for your weigh in information letter in May 2011.

Livestock Quality Assurance Guidelines:

A 4-H member will be required to take LQA two times: once for youth 13 and under and once for youth 14 and over.

Market Sheep Reminder:

Market lambs will be accepted for exhibition at the Ravalli County Fair only if tails are not docked shorter than 1-1/8 inches, as measured with a tail measuring device at the spring weigh-in. Questions? Mary Koenan at 777-3809

Sheep Seminar

Date: Saturday, Apr. 30, 2011

Time: 2:00pm

Location: Campbell Home, 777 Oil Well Rd, Corvallis

For More Information Contact: Chris Campbell at 207-0064

Or Mary Koenan at 239-4809

RSVP to Ravalli Extension Office at: 375-6611

Ravalli County Fairgrounds Open Riding Opportunity



Open riding is beginning here at the Fairgrounds. We welcome individuals and families to ride in both our Main & Quality Supply Arenas when no other scheduled activities are occurring. We ask all users to purchase a membership for the riding season. You can get yours at a 10% discount this Friday, April 1st - no foolin'. Visit us between 4-7 in the office at 100 Old Corvallis Road. Individual memberships are \$30, families \$50. All members will be entered in a drawing for a 2012 membership. Last season's winner was the Shelli Tracy Family - congratulations to them - see you all soon!

Deborah Rogala, Managing Director, RC Fairgrounds

406-363-3411, 100 Old Corvallis Road, Hamilton, MT 59840

Horseback Riding at Sapphire Event Center

Date: Every Monday

Time: 6-8PM

Location: Sapphire Event Center, Corvallis

Cost: \$5 per horse/rider

Once again John and Cindy are offering a great deal and we need to guarantee at least 15 riders each time to cover the cost of lights. The second Monday of the month there will not be riding due to regular 4-H Business meetings. If the weather gets below 25 degrees or the roads are treacherous, the rides will be cancelled. RSVP's to Coral Maxwell at 821-3413, (C) 239-1380 or via email (preferred) at: rmaxwell@mrbarhorses.com

Note to Parents of Horse Project Members:

It is time to start looking for sponsors to help cover the costs of the fair horse show. As the county horse committee, we are asking parents and project members to be involved in this process. If parents are willing and able to sponsor at least \$15 it would cover a large part of the horse show expenses. Project members are also welcome to invite other individuals or busi-

nesses to be a sponsor of the 4-H fair horse show. The sponsor money pays for photo awards, judges, and smaller expenses at the horse show. Thank you in advance for your sponsorship. Please make checks out to: Ravalli County 4-H. Mail it to: Jonell Erhart, 4-H horse committee, 2869 Caribou Ln, Stevensville, MT 59870.

4-H Horse Clinic for all Levels:

Date: Saturday, April 9, 2011

Time: 10:00 am to 2:00pm

Location: C-Max Stables

What to Bring: Your horse, helmet, and a lunch.

For the safety and health of your horse please remember to vaccinate your horse at least a week before the clinic.

Directions: Eastside Hwy between Corvallis and Hamilton. Turn east onto Bass Ln. Turn left at the "T". Take the next right. C-Max is at the top of the next hill.

Please RSVP to: jonell@cybernet1.com



New County Wide Global Citizenship Project



Global Citizenship promotes global understanding and valuing diversity. It's an opportunity to share travel experiences, learn about cultural practices – food, art, dress etc. Improve research, discussion, presentation skills. If this interests you, contact the Extension Office at 375-6611 to get your name on the RSVP list to be contacted when we set our first meeting.

2011 Fashion Revue

Dazzling Designer Showcase

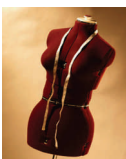
Date: Thursday, April 28

Location: Corvallis School Gym

Registration Deadline: Friday, April 8

Get your sewing machine ready! Enter your quilts and garments into the 2011 Fashion Revue. Members can enter pieces created between May 2010 - April 2011.

Judging will be the same evening, starting at 4 PM. Registration for the event is due April 8, at the Extension Office. Call the office to get a packet and sign up or find online at: http://www.msueextension.org/ravalli/4-H_Forms.html



4-H Community Carnival 2011

Theme: Call of the Wild Around the World

Date: Saturday, April 16th 2011

Time: 5:00-8:00 PM

Location: Ravalli County Fairgrounds, First Interstate Center Community Dance to follow from 8 to 10 PM

(Snacks, drinks and glow sticks are for sale via cash or carnival tickets) **Games-Food-Dance Goodies-Silent Auction**

Purchase tickets for a chance to win the Quick Draw Painting



A one of a kind "Quick Draw" oil painting from Pat Baker (A world renowned artist) Painted Mountain Gallery Proceeds support the Ravalli County 4-H Program! Club with the top ticket sales helps save our local animals.

Thank you for your support!

Toastmasters Youth Leadership Opportunity

Develop your public speaking skills!

Date: Tues. April 5-May 24

Time: 4:00pm-5:30 PM

Location: MSU Extension Meeting Room

Cost: \$10 per participant

Deadline: Register by Friday, April 1

This is open to 4-H members 8-18. Toastmasters International in partnership with Ravalli County 4-H will provide an eight-session, workshop-style series that enables participants to develop their potential through practical experience. It provides emphasis on specialized speaking and leadership skills, and individual needs. Participants learn to:

- Overcome nervousness when speaking before an audience.
 - Organize and present ideas logically and convincingly.
 - Listen carefully to others' ideas.
 - Offer advice to help others improve their speaking and leadership skills.
 - Participate in - and even lead - group discussion or meetings.
 - Prepare for Annual 4-H Speech and Demo Day on May 24!
- Increase your self-confidence as they learn, make new friends and have fun. Toastmasters is an enjoyable learning experience! Fee includes a notebook and snacks that will be provided.



Save the date: Tuesday, May 31, 2011 2011 Speech and Demo Day

Date: Tues., May 31, 2011

Time: 6:00pm— 8:00 PM

Location: Extension Meeting Room

Those who are interested in participating in the Speech and Demo Day are strongly encouraged to take the Toastmasters Youth Leadership series offered for eight weeks.



Fair Ribbon Recycle Program

Ravalli County Fairgrounds would like to recycle fair ribbons! If they are not written on, please bring by the fair office. Save money. Save the environment! Questions? Rusty at 363-3411.

THANK YOU FROM THE BARNYARD BUNCH

We want to thank everyone who came out and supported our tack sale. It was a great success and we trust you went home with some great deals. *THE BARNYARD BUNCH*



Save the Date: July 19-22

Loon Lake 4-H Camp

Registrations available online at:

<http://www.msuextension.org/ravalli>

Registration Deadline: June 24

Silver Spurs 1/2 Hog Raffle

Silver Spurs teen group is raffling off 1/2 a hog that will include smoked bacon and ham. Tickets are \$2.00 ea. Or 6 for \$10.00. Winner will be drawn and notified on May 1. Proceeds support our teen group year end trip. Contact Ginger Desrosier @ 777-2215

County Wide Photography Meeting

We will be having a photography meeting on April 9th at 2:00 at the meeting room (scout house) at the Three Mile Store. Rick Paris will be talking about what makes a good photo and we will also be going over what the fair judges will be looking for. To get to the 3-mile store you turn off east side hwy onto Ambrose or 3-mile road. Go to Store Lane and if you are on Ambrose turn left and go almost to the store. If you are on 3-mile go to the 4 way stop and turn right 899 Three Mile Creek Road. The meeting room is with the storage units by the store. There is extra parking in the open area between the store and the storage units. Please do not block the units and leave in front of the store open for customers. If you have folding chairs please bring them. They have about 20 chairs there but with parents we may need more. Hope to see you there! Tonia , 777-7044

Save the Date! June 25, 2011

Silver Spurs will host

A Walk-A-Thon to Support St. Judes Children's Hospital! Look for more details next month!

4th Grade Farm Fair

4-H members we ask your help as a **Group Leader**, to become part of a large team which works together to make the Farm Fair a success. We look forward to counting on your help this year.

Date: Fri., May 6, 2011

Time: 8:00am -3:00pm

Location: Ravalli County Fairgrounds

You will lead 1 group of about 15 students to 16 different agriculture education stations. Each group of students will have a teacher or adult chaperon with them. The 4th grade students will attend stations in the morning then have a one-hour lunch break. The group will resume stations following lunch until 2:30 when the students board the buses to return to school. A BBQ hamburger lunch will be served to everyone in attendance. All activities will be outdoors, please dress accordingly. A Group Leader meeting will be held on Friday, May 6 at 8:15 A.M.

with coffee and donuts. Please call Luanne Bauman at 961-4343 or e-mail me at lbauman@montana.com

Attention Robotics Project Members

We are changing the days we meet from Saturdays to the following:

Date: Every Thursday evening from April 7th through May 19th
Time: 6:30pm to 8:30pm

Location: The DeBoers home on Bell Crossing.

RSVP: by 6pm that night if you are coming so we know how many to set up for.

We don't expect everyone to come each week, but hope you can make some of the 7 meetings. Josh and Nick will be available with the equipment to help each child one on one build their robots and program them. Parents will need to stay with their children. Brand new up to date robotics books are now available at the Extension Office for \$7 each. Please pick one up before you come to class and we will help you work through them so they are complete by mid-May. We're not going to meet in the summer, except mid-August if there is enough interest, to plan and prepare fair exhibits that would need to be ready for the August 22nd judging. Thank you and we'll plan to see you on Thursdays. The DeBoers Questions? Contact: Loree at 360-4606 or via email: loreed@upwardaccess.com

Congratulations to Alyssa McCrossin

**Winner of this year's Spirit of Prudential Award
Great Job Alyssa!!**

4-H Events: In the state

Montana 4-H Congress 2011

July 12-15, 2011

Who: Open to all members 4-H age 14-19.

Theme: "Unlock the Treasure"

Date: July 12-15

Location: Montana State University in Bozeman

Registration Deadline: mid-July, official date TBA, cost: \$210.00

Montana 4-H Congress has been going on for over 75 years! This event includes Workshops, contests, entertainment, social events, and the opportunity to recognize all State Award Winners as well as 4-H Foundation Scholarship Winners.

So how do you get to Congress? Compete in one of the competition areas (dates are listed below) on the local level in Stir-Ups, Fashion Revue, Quilting and Speech and Demo. Or create a team on your own in any of the other areas Livestock Judging, Horse Judging, Gavel Games, etc. These consist of a team. One team per area will go to Congress. If you are interested in creating a team, contact the Office by May 30, 2011

Visit for <http://montana4h.org/#program:1> more information!

International Inbound

Montana 4-H welcomes 34 Japanese delegates this summer from July 22-August 18. We are looking for families with kids ages 10-18 to host a Japanese youth. Families with no children or younger children may host an adult chaperone. This is a great opportunity to learn about another culture first-hand. Delegates come to experience life in a typical American family so planning special activities is not necessary. They also come with health insurance and their own spending money.

Inbound IFYE's from other Countries looking for a host family:

Austria, Female, Grabmer	Austria, Male, Christian
Finland, Female, Heli	Germany, Female, Neele
Scotland, Gillian	Scotland, Female, Miriam
Greece, Female, Desppina	Sweden, Male, Johannes
Switzerland, Female, Anna	North Ireland, Female, Alice

To apply to host, contact your County Extension office, Beth Foster at 461-3014 gbfosterinmt@msn.com or Stephanie Davison at 994-3502 sdavison@montana.edu

4-H Livestock Judging Invitational, in Missoula

Date: Saturday, April 23, 2011

Time: 8:30am Registration, 9am Start, Awards after Lunch, Finished by 1pm

Location: Ag Education Center near Big Sky High School on South Ave West, Missoula

Cost: Judging Participants @ \$8.00 each (price includes all classes & lunch). Additional lunches for non-participants @ \$3.00 each

Registration Deadline: Pre-Registration due postmarked by Wednesday, April 20, 2011

Age Divisions: Age is determined as of October 1, 2010

- Novice, any age (this is your first livestock judging contest)
- Junior Member, 9-13 years old
- Senior member, 14-19 years old

Potential classes include: Feeder Pigs, Feeder Lambs, Feeder Steers, Replacement Heifers, Sows, Breeding Ewes, Tool ID For a registration form contact Ravalli Extension at 375-6611

MT 4-H Circuit Livestock Judging Contest, Dillion, MT hosted by Sagebrush & Snowdrifts 4-H Club

Date: Saturday, April 16, 2011

Time: Registration begins at 8:30 am, contest begins at 9:00 am

Location: Sitz Angus Ranch Sale Barn, Dillon, MT (1800 Albers Lane, 9 miles on Hwy 91 N, turn Right)

Ages: Novice, Junior & Senior Divisions

Judging classes of: beef, sheep, swine & goats.

Registration: Please pre-register by April 13th.

Fees can be paid and changes made the day of the contest.

Cost: \$10 per contestant, includes registration & lunch. \$5 for additional lunches.

To Register Contact: Beaverhead County Extension Office

2 S. Pacific STE #11, Dillon, MT 59725, call: 683-3785

E-mail: beaverhead@montana.edu

2011 Montana Fair Junior Livestock Show

Dates: August 12 - 20, 2011

Location: Yellowstone County, Billings, MT

Registration Deadline: Entries must be received by July 1 (not postmarked July 1!) All individuals are required to bring their animals to one ear-tagging site on a specific date at a specific time. Those Tagging dates are listed below.
 Beef Tagging – Saturday, February 5 – 9:00 a.m. – 12:00 p.m.
 Animal Quality Assurance Training – 10:00 a.m. – 11:30 a.m.
 Sheep/Swine Tagging – Saturday, June 4 – 8:00 a.m. – 11:00 a.m.
 Animal Quality Assurance Training – 9:00 a.m. – 10:30 a.m.
 An Exhibitors Handbook will be online this year. You can also register online at www.montanafair.com.

A 4-H Challenge from, Choteau, Montana

Dear 4-H Members:

I am a member of the Old Agency 4-H Club in Choteau, Montana. At our February meeting, we voted to donate \$100 to the Taylor Endowment Challenge. Because the Taylor family is matching donations, our \$100 donation becomes a \$200 donation to the 4-H Foundation.

We are all so fortunate to be a part of 4-H in Montana. The benefits of the educational opportunities, community involvement, working and learning together through all the programs and events provided through 4-H should not be taken for granted. Of course there are costs associated with any program and we need to step up and make sure to support these programs financially. Because of the generosity of the Taylor family, we have this chance to have our donations DOUBLED!

Old Agency 4-H Club challenges YOU to meet our donation of \$100 to the 4-H Foundation. If every club in Montana were to match our donation, we would be sure to hit the maximum dollar match so generously provided by the Taylor Endowment Challenge.

Please discuss our challenge at your next club meeting and vote to support this fund raising effort. It's not often that we have a chance to double our financial contributions through a matching funds donation.

Sincerely, *Lexie Sullivan*

Lexie Sullivan, Vice President, Old Agency 4-H Club, Choteau, MT

NATIONAL VOLUNTEER WEEK

APRIL 18-24

Thank You to each and every volunteer in the Ravalli County 4-H program who contributes so much to the positive experiences for our youth. 4-H members and parents, take this opportunity to show your appreciation to your 4-H leaders during National Volunteer Week!!

OUR 4-H PROGRAM IS STRONG THANKS TO OUR AWESOME VOLUNTEERS!

2011 MT 4-H Shooting Sports Competition

Ravalli County Shooting Sports participant results:

3-D Archery:

Primitive Bow ages 13-14: Walker Webber ~ 1st Place
 Bow Hunter ages 13-14: Klayten Waters-Borden ~ 6th place
 Ben Thomas ~ 7th place
 Austin Potton ~ 34th place
 Bow Hunter ages 15-18: Nathan Potton ~ 2nd place
 Sarah DelRae ~ 7th place
 Olympic Recurve 15-18: Justin Nelson ~ 1st place
 Unlimited ages 9-10: Cash Golden ~ 2nd place
 Also in attendance: Micheal Tummarello, Casey Halstead, Kyle Perkins, Anna Baker, John Hillman

Target Archery Results:

Primitive Bow 9-10: Sam Hale ~ 2nd place
 Ben Hale ~ 3rd place
 Primitive Bow 11-12: Tucker Webber ~ 3rd place
 Easton Powell ~ 11th place
 Primitive Bow 13-14: Walker Webber ~ 6th place
 Ben Thomas ~ 7th place
 Bare Bow Match Winner: Tucker Webber
 Bare Bow 9-10: Sam Hale ~ 3rd place
 Charlotte Powell ~ 4th place
 Bare Bow 11-12: Easton Powell ~ 7th place
 Bare Bow 15-18: John Hillman ~ 3rd place
 Limited Match Winner: Ben Thomas
 Limited 9-10: Charlotte Powell ~ 2nd place
 Limited 11-12: Tucker Weber ~ 1st place
 Limited 13-14: Colter Zimmerman ~ 1st place
 Limited 15-18: Weston Erickson ~ 1st place
 Bow Hunter 9-10: Cash Golden ~ 2nd place
 Bow Hunter 11-12: Kyle Perkins ~ 30th place
 Bow Hunter 13-14: Walker Webber ~ 1st place
 Ben Thomas ~ 3rd place
 Colter Zimmerman ~ 13th place
 Austin Potton ~ 17th place
 Austin Knuth ~ 37th place
 Bow Hunter 15-18: Casey Halstead ~ 6th place
 Sarah DelRae ~ 9th place
 Nathan Potton ~ 11th place
 Olympic Recurve 9-10: Sam Hale ~ 1st place
 Ben Hale ~ 2nd place
 Olympic Recurve 13-14: Greg Charlton ~ 2nd place
 Olympic Recurve 15-18: Justin Nelson ~ 3rd place
 Casey Halstead ~ 6th place
 John Hillman ~ 8th place
 Unlimited 9-10: Cash Golden ~ 2nd place
 Unlimited 11-12: Kyle Perkins ~ 7th place
 Unlimited 13-14: Ben Thomas ~ 6th place
 Walker Webber ~ 7th place
 Klayten Waters-Borden ~ 9th place
 Colter Zimmerman ~ 12th place
 Austin Potton ~ 15th place
 Greg Charlton ~ 16th place
 Unlimited 15-18: Casey Halstead ~ 2nd place
 Nathan Potton ~ 9th place
 Sarah Del Rae ~ 11th place

**Congratulations to all of our Archers! Thank you for
 Representing Ravalli County at the State Shoot!**

Attention all 4-H Members:

Design the 2011 State Horse Show Book Cover!

Entries must be received in the Prairie County Extension Office postmarked no later than **May 13th**. Entries should include artwork and theme (*not artwork alone*). Please include a 4-H clover and the year 2011 in your design. Contestants must be 4-H members in the State of Montana, and all entries must have a parent's signature. The winner will be notified by phone after May 31st. The winning design will also be used on official State 4-H Show t-shirts and sweatshirts. There is no limit on entries per person. Please complete the form below and send it along with your submission to: Prairie County Extension Office, PO Box 7, Terry, MT 59349

2011 State 4-H Horse Show Book – Cover Art Design Contest

Name: _____

Address: _____

County: _____

Age: _____

4-H Club: _____

Phone number: _____

Email: _____

I give my permission for the 2011 State 4-H Horse Show Committee to use my artwork on the cover of the 2011 State 4-H Horse Show Book, and on official Show t-shirts and sweatshirts as well as to advertise the State Show and promote 4-H in general. I understand that my name will be printed in the Show Book as the winner of the design contest, and that I will not receive financial compensation for the use of my art.

 Signature of 4-H Member (date)

 Signature of Parent/Guardian (date)

Other Opportunities:

If space is available, the 4-H newsletter will include events, contests and other opportunities that are non-4-H sponsored events.

BACKCOUNTRY YOUTH DAY

Hosted by the Selway-Pintler Wilderness
Back Country Horsemen

Date: Sat. May 21, 2011

Time: 10:00 am– 2:00pm

Location: Lake Como Horse Camp

RSVP: Kathy at contacts below by May 2

Lunch will be provided, Students must sign up with leaders

Topics: Packing Horses & Mules in the Back Country

Rescuing Trails, Camping Smart & Safe, Dutch Oven Cooking, etc.

For More Information Contact: Kathy Hundley @ 821-0921 or

363-8230 or via email: montanakath@yahoo.com



KMON Livestock Judging Contest Results:

Madison Weber placed 79 out of 111 4-hers -first time judging

Wes Brown placed 67 out of 111 4-hers first time judging

**Congratulations and thanks for representing
Ravalli 4-H!**

1st Annual Open All-Breeds Clinic / Schooling Show

Date: Sat. May 14, 2011

Location: Sapphire Event Center, 1750 Eastside Hwy, Corvallis

Cost: \$15.00 per clinic session or \$8.00 per class paid by noon

May 13, 2011 –(add \$5.00 each class if post entry) 4-H*
\$45.00 All Day Fee or \$10.00 clinic session - \$5.00 a class– need
to bring 4-H card

**WELCOME TO OUR NEW CLINIC *SCHOOLING SHOW WITH
SOME PLAYDAY CLASSES** Members of the Western Montana
Quarter Horse Assn. would like to welcome you and your family
and hope you enjoy our clinic sessions and classes we put to-
gether just for you. Seasoned members of our association will be
instructing the clinic sessions which will give you an opportunity
to ask questions and get some tips on how to help you and your
horse communicate better achieving a smoother response to
each other. For Classes and details contact: Debby @ 406 531-
3522 or Kathi @ 880-3161

Save the Date! Livestock Jackpot, July 2, 2011

At the Ravalli County Fairgrounds

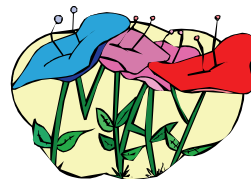
Beef - Sheep - Hogs, and possibly goats!

Questions? Contact: Shelley Brown at 777-3539

Chris Campbell at 961-3458

or Melissa Mc Fadgen at 777-5256

Look for more details next month!



ENTER THE 3rd Annual

“BE BIG IN YOUR COMMUNITY CONTEST!”

The BE BIG Campaign invites everyone, big and small, to take action and raise awareness for how Clifford's BIG Ideas (*Share, Be Kind, Help Others, Be a Good Friend, Play Fair, Have Respect, Be Truthful, Believe in Yourself, Work Together and Be Responsible*) can make the world a better place. As part of the BE BIG Campaign, the 3rd Annual BE BIG in Your Community Contest will award \$75,000 in community grants* to the BIGGEST ideas that best demonstrate Clifford's BIG Ideas! Last year's Grand Prize Winner, Jennifer O. and her team's BIG Idea to create a hospital classroom for young cancer patients in her local hospital won \$25,000 from the BE BIG Fund. Your BIG Idea might just be next! Scholastic, HandsOn Network and American Family Insurance will work with the winners to bring their Big Ideas to life! Everyone is invited—parents, kids, teachers or community leaders—to submit their ideas now through June 17, 2011. For contest entry forms and official rules visit www.scholastic.com/cliffordbebig/contest BIG Awards! One (1) Grand Prize BIG Idea will win a \$25,000 Grant, Ten (10) first place BIG Ideas will win a \$2,500 Grant and Nineteen (19) second place BIG Ideas will be selected to receive a \$1,315.79 Grant (via HandsOn Network affiliate organizations or designees) from the BE BIG Fund to be used towards implementing the winning proposals.*

Seeking Nest Watch Volunteers

Dear Birding Friends, As spring approaches, we're ready to begin another season of NestWatch, a nest-monitoring project for all North American birds. As always, we're hoping to grow our band of dedicated citizen scientists. Without them we would never have an opportunity to study long-term changes in nesting behavior. I'm sending you a short article I've written, in the hope you could use it in a newsletter, on a website, or a blog, or wherever you see fit. Feel free to shorten the text or tweak it to customize it to your needs. If you have any questions about NestWatch, please let me know. I'm thrilled to be leading the project and with your help I hope to make it even better. Thank you in advance for any assistance in helping spread the word! For More information contact: Jason Martin, NestWatch project leader, Cornell Lab of Ornithology, (607) 254-2450 or via email: jmm677@cornell.edu





- **Ravalli County 4-H Advisory Council Meeting**
- **Held every other month on the 3rd Monday**
- Date: Mon. May 16, 2011 Time: 6:30 pm
- Location: Stevensville, TBA



- **Teen Council Meeting**
- Date: May 19 Time: 6-8:00PM
- Location: TBA
- Contact: Extension at 375-6611

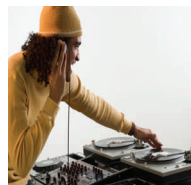


- **North Valley Poultry Meeting**
- Date: Tues., Apr. 19, 2011 Time: 6:30pm Location: Missoula Extension Office
- Contact: Laura DeNitto 273-4645 or myfunnyfarm4@msn.com

- **South Valley Poultry Meeting, Every Third Tuesday of the Month**
- Date: Tues., Apr. 19, 2011 Time: 6:30 pm Location: Corvallis High School Cafeteria
- Contact: Virginia Chaffin at 363-4793, vchaffin@montana.edu or George Mullen at 961-1190, kmkfarm@gmail.com



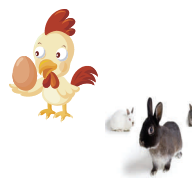
- **Horse Committee Meeting**
- **Held 2nd Thursday every month**
- Date: Thurs., Apr. 14, 2011
- Time: 7:00pm
- Location: Kodiak Jax's Upstairs, Stevensville



- **Hooligan's 4-H DJ Committee**
- Date: May 4
- Time: 6 PM
- Location: BR Early Learning Center
- Contact: Nancy Preston at 777-1163.



- **Livestock Committee Meeting**
- **Held 2nd Tuesday every month**
- Date: Tues. May 10, 2011,
- Time: 7:00 pm
- Location: Hornung Area, RC Fairgrounds

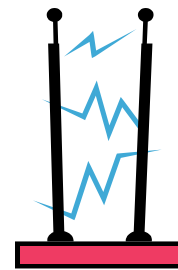


- **Small Animal Committee Meeting**
- Date: Wed., Apr. 13, 2011
- Time: 6:30 pm
- Location: Hamilton House, Victor
- Contact: Laura DeNitto at 273-4645



- **County-Wide Electricity/ Aerospace Joint Project Demonstration Day**

- Date: TBA
- Time: TBA
- Location: TBA
- Contact: Pete or Sara Morin 961-5226 or sara.morin@rkymtn.net



- **County-Wide Goat Meeting**
- Date: TBA Time: TBA
- Location: TBA
- Contact: Heidi Etter at 381-2282 or icknree2@msn.com



- **County-Wide Rabbit Meeting, Body Parts, Patterns, Bones**
- Date: Fri., Apr. 8, 2011 Time: 7:00 pm
- Location: Lakeland Feeds
- Contact: Katie Freeman at 207-6218 or junkbunny3@aol.com



- **County Wide Robotics Project, Held:** Every Thursday evening from April 7th through May 19th
- **Date:** Every Thursday evening from April 7th through May 19th
- **Time:** 6:30pm to 8:30pm
- **Location:** The DeBoers home on Bell Crossing.



- **County Wide Beading Meeting**
- Date: Thurs. Apr. 14, 2011 Time: 7:00PM
- Location: Bitterroot Nazarene Church, Victor
- Contact: Cora Vincent at 493-5181 or beadingfancy@gmail.com



April 2011

May 2011 & Beyond



Apr. 1-3 Montana 4-H Rec Lab
 Apr. 1 MT Foundation Scholarship Deadline
 Apr. 1 4-H Ambassador App. Deadline
 Apr. 1 Toastmasters Reg. Deadline, p. 5
 Apr. 2 Quilt-in-a-Day Camp, p. 4
 Apr. 5-May 24 Toastmasters Youth Leadership, p. 4
 Apr. 7-May 19 County Wide Robotics, p. 5
 Apr. 8 County Wide Rabbit Meeting, p. 9
 Apr. 8 Fashion Revue Reg. Deadline, p. 4
 Apr. 9 4-H All Level Horse Clinic, p. 4
 Apr. 9 County Wide Photography Meeting, p. 5
 Apr. 13 Small Animal Committee Meeting, p. 9
 Apr. 13 Dillion Livestock Judging Reg. Deadline
 Apr. 14 Horse Committee Meeting, p. 9
 Apr. 14 County Wide Beading Meeting, p. 9
 Apr. 16 Carnival 2011, p. 4
 Apr. 16 Dillion Livestock Judging , p. 6
 Apr. 18-24 National Volunteer Week, p. 6
 Apr. 19 North & South Valley Poultry Meeting, p. 9
 Apr. 20 Missoula Livestock Judging Reg. Deadline
 Apr. 23 Missoula Co. Livestock Judging, p. 6
 Apr. 28 Fashion Revue 2011, p 4
 Apr. 30 Sheep Seminar, p. 3

May 1
 May 4
 May 6
 May 10
 May 13
 May 14
 May 16
 May 19
 May 21
 May 31
 Jun. 1
 Jun. 1
 Jun. 1
 Jun. 12-18
 Jun. 25
 Jul. 1
 Jul. 2
 Jul. 12-15
 Jul.19-22
 Aug. 12-20
 Aug31-Sept.3

Silver Spurs Hog Raffle, p. 5
 Hooligan's DJ Meeting, p. 9
 Fourth Grade Farm Fair, p.5
 Livestock Committee Meeting, p. 9
 State Horse Show Book Cover deadline, p. 7
 Western MT Qtr Horse Clinic, p. 8
 4-H Council Meeting, p. 9
 Teen Council Meeting, p. 9
 Backcountry Youth Day, p. 8
 Speech & Demo Day, p. 4
 Market Swine Ear Tagging Deadline, p. 3
 Market Sheep Weigh In, p. 3
 Market Goat Weigh In, p. 3
 Citizenship Washington Focus
 Walk-a-thon for St. Jude's, p. 5
 MT Fair Jr Livestock Show Reg. Deadline, p. 6
 Livestock Jackpot, p. 8
 Montana 4-H Congress, p.5
 Loon Lake 4-H Camp, p. 5
 MT Fair Jr. Livestock Show, p. 6
 Ravalli County Fair



The MSU Extension Service is an ADA/EO/AA/Veteran's Preference Employer and Provider of Educational Outreach.

4-H: The Youth Development Program of MSU Extension

Return Service Requested

RESORTED STD
 US POSTAGE

MONTANA STATE UNIVERSITY
 EXTENSION
 Ravalli County Extension Office
 215 S 4th St., Suite G
 Hamilton, MT 59840