



**DON'T FORGET TO FILE A REPORT FOR
YOUR CLUB'S EIN!**

All Montana 4-H clubs with EIN numbers must file a report by February 15 of 2010 for the 2009 tax year. The Montana 4-H year is October 1-September 30, hence the filing date of February 15. You can do this by going to the following website: <http://epostcard.form990.org>

If you filed last year, you should have a login id and the process will be simple by logging in using that id. If you did not file last year, you will register as a new user and the process is still simple.

BE SURE TO KEEP YOUR LOGIN ID ON FILE FOR NEXT YEAR!

Some of you may have filed a 990-N/E postcard last year, but all clubs need to file in 2010. Please keep a copy for your records and bring or send a copy to Nori at lake1@montana.edu at the Extension Office.

All 4-H clubs in Montana must have an EIN number, according to IRS guidelines!

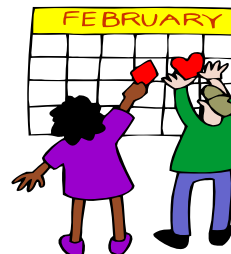
If you need help or have questions, please contact Nori at the Extension Office.

LEADER ORIENTATION

ALL 4-H leaders are required to attend a Leader Orientation this year. In February, these orientations will be offered on the following days: February 2, 7:00 pm, Nori's house in Polson (space limited); February 3, 5:30 pm, Extension Office, Ronan; February 20, Winter Project Day, Community Center, Ronan.

Many leaders have already attended one of these trainings and you do not need to attend again. Leaders who have attended this training have found it to be very helpful, even if they have been a leader for many, many years. If you are a first year leader, you will be amazed at all the information! Again, this is a new requirement, as was the background check. This training is interactive.

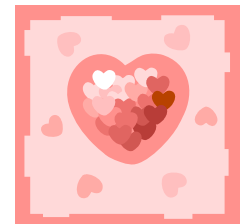
Please call the Extension Office to reserve your spot at one of these trainings. Space is limited at the training in Polson. First come, first served.



Put Leader Orientation on your calendar!

WHAT'S INSIDE

- EIN 1
- Leader Orientation 1
- Club Officer Training..... 2
- Club Financial Reports 2
- Winter Project Day 2
- People Partner Grant 2
- Washington Focus 2
- Western Regional Forum... 2
- Recreation Lab 3
- International Host..... 3
- Girls for a Change 3
- Prom Contest..... 3
- Horse Project Meeting 3
- Steer Weigh-in Report..... 3
- OAT 3
- Awards Meeting 3
- Sewing Meeting 3



MSU/Lake County Extension
300 Third Avenue NW
Ronan, MT 59864
(406) 676-4271
lake1@montana.edu
www.msuextension.org/lake

Jack Stivers
MSU/Lake Co. Extension Agent
jstivers@montana.edu

Nori Pearce
MSU/Lake Co. Extension Agent
npearce@montana.edu



OFFICER TRAINING FOR YOUR CLUB

The Ambassadors would love to come to your club to help your members learn more about running a club meeting and the roles of officers within the club. This presentation will take about 45 minutes.

If you are interested in having the Ambassadors come to your club for this presentation, please contact Nori at the Extension Office.

CLUB REPORTS

All clubs **must** turn in their 2008/2009 financial summaries to the Extension Office. Please do this right away!

Just a reminder...For a 4-H meeting or activity, the Extension Office needs to be informed that the event or activity is happening. An easy way to do this and to keep your club members informed at the same time is to create a monthly or annual calendar of club meetings and activities. Give a copy to your members and a copy to the Extension Office.



WINTER PROJECT DAY

Come join the fun at this year's Winter Project Day on **Saturday, February 20, from 9:30 am—1:30 pm** at the Community Center in Ronan. Lunch is included. You will be able to choose up to three activities to participate in. Workshops we currently have planned include:

Building a Birdhouse	Shooting Sports
Photography	Cloverbuds
Robotics	Who Are You?
Horticulture/Gardening	Small Animals
"Hearty, Healthy Thank You's"	
Quick, Easy & Fun Snacks	

The Ambassadors will have a workshop on Duties of Club Officers and the 2-hour leader orientation will be available as well. Lunch will be served and there will be a special presentation during lunch.



Ambassadors will present "CSI 4-H: The Clues to a Successful 4-H Club" as a workshop for all participants. Plan to join us to find the clues that will help solve your 4-H club mysteries.

It's going to be a fun Day! There is no charge for this day, thanks to the Lake County 4-H Council, so mark your calendars and be there!

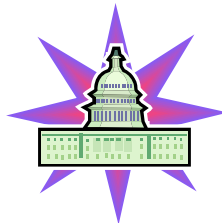
IT IS GOING TO BE SO MUCH FUN!

PEOPLE PARTNER GRANTS

These grants offer up to \$500 in financial support to 4-H groups that work with people in a way that will enhance the "quality of living" in a community. Applications may be obtained at the Extension Office or at <http://www.montana4h.org/#program:31>. Applications are due February 1. This is a great opportunity for your club to apply for financial support for a community service project. Applications should meet the following criteria:

- Youth should be involved in determining, planning, conducting and evaluating the project.
- Project will make it possible for people to accomplish something educational and worthwhile that helps them reach a higher quality of life.
- There is community support and acceptance of the project, as evidenced by partners listed in the grant application, additional funding sources and resource persons and agencies involved.
- The project has lasting benefits

CITIZENSHIP WASHINGTON FOCUS



This trip takes 4-H members from across the state of Montana to Washington DC June 12th to the 19th. This is a fantastic opportunity to see our nation's capital, meet legislators and learn leadership and citizenship skills. Any 4-H member of high school age may apply. Applications are available at the Extension Office and are due February 1st with a deposit of \$650. Applications are available at the Extension Office or <http://www.montana4h.org/pub/files/CWF%202010.pdf>. \$900 has been budgeted by 4-H Council (amount to be divided among those attending) to help with the expense of this trip. There is also one statewide \$500 scholarship available for one lucky 4-H member. The application for this scholarship can be downloaded at <http://www.montana4h.org/pub/files/Susan%20Dufner%20application.pdf>.

WESTERN REGIONAL LEADERS

FORUM—March 11-14, Albuquerque, New Mexico

The WRLF is a place to meet new and old friends, share ideas, explore new skills and learn the latest in 4-H. Information and registration is still available at <http://nm4h.nmsu.edu> or by contacting the Extension Office.

“SPARK YOUR IMAGINATION” at the State 4-H Recreation Lab

This year’s Rec Lab will be held in Corvallis, April 16th to 18th. Rec Lab provides an opportunity for youth 14 years old and older and adults to enhance their leadership, communication and team building skills in an action packed and interactive setting. It is designed to provide tips and tricks for being a better club, or a better member or leader within your club. Mark your calendars now to attend! This program moves around the state and may not be this close to home again for awhile. **Scholarships to help Lake County 4-H members attend will be available from Council.** We will also be needing chaperones to attend. If you are interested in attending, please let Nori at the Extension Office know. More information on this event will be in future newsletters.

INTERNATIONAL

It’s not too early to begin recruiting host families for the 2010 Summer Inbound programs. This year we’ll have 32 Japanese delegates and three adult chaperones coming to Montana from July 21-August 19. We’ll also have four high school delegates coming in early August. We need families/schools that are willing to host these year-long delegates.

GIRLS FOR A CHANGE

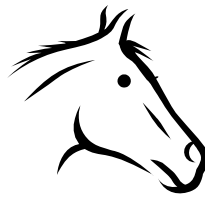
The annual Girls for a Change conference is Saturday, February 27, 2010 in Bozeman. Keynote speaker, Stephanie Quayle, is a Bozeman native, now a country singer living in Los Angeles. Cost is \$20 per person for a full day of workshops. Some scholarships are available. For more information, go to <http://www.allthrive.org/programs/girls-for-a-change/2010-live-out-loud-conference>.

PROM CONTEST 2010

Teens—make your prom outfit & enter to win! Grand prize is \$50,000—cash for college and a \$1000 Jo-Ann gift card. Go to www.joann.com/prom for rules & details.



HORSE PROJECT MEETING



Horse project meetings will be held the 4th Sunday of each month, **3:30 pm**, at the Hobby Horse Arena in Polson. Next meeting will be **Sunday, January 24**. Bring your horse!

STEER WEIGH-IN HELD

Steer weigh-in was held January 9 with a total of 34 steers weighed. The lightest steer was 650 pounds and the heaviest 960 pounds, average weight was 800 pounds.

QUALITY ASSURANCE TRAINING

The final Quality Assurance Training is scheduled for Saturday, March 27, at the fairgrounds in Ronan. If you are planning to take a market animal to the fair and haven’t attended a training yet, mark March 27 on your calendar. This will be your last chance to attend as this is the **final** session planned.

AWARDS & RECOGNITION WORK MEETING SCHEDULED

6:00 PM, January 25, Community Center

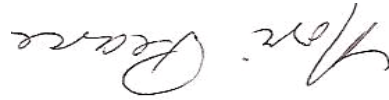
At the initial awards & recognition meeting held earlier in January, it was decided by those attending to expand the recognition received for grand and reserves at the fair. There is a lot of fine-tuning to be done and decisions to be made at the January 25th meeting. Please plan to come and help.

SEWING PROJECT PLANNING

MEETING—6:30, Monday, January 25, Lake County Extension Office

This informational meeting is for all 4-H sewing and knitting project members. All sewing skill levels are welcome. At this meeting, a schedule will be set for upcoming project work sessions. Adult helpers are welcome too!

The programs of the MSU Extension Service are available to all people regardless of race, color, national origin, gender, religion, age, disability, political beliefs, sexual orientation, and marital or family status. Issued in cooperation with the U.S. Department of Agriculture, Douglas L. Steele, Vice Provost and Director, Extension Service, Montana State University, Bozeman, MT 59717.



Jack Stivers
Nori Pearce

MSU/Lake County Extension Agents



EXTENSION
MSU/Lake County
300 Third Avenue NW
Ronan, MT 59864

AN EQUAL OPPORTUNITY EMPLOYER

4-H: The Youth Development Program of MSU Extension

The MSU Extension Service is an ADA/EO/AA/Veteran's Preference Employer and Provider of Educational Outreach.